



IN SUSTAINABILITY
WE TRUST

Annual Review
2023



CEO'S MESSAGE

The planet has not faced such extreme droughts and floods, coupled with unexpected shifts of weather in its recent history.

We are trying to navigate through energy transition and yet we are beyond climate change as some scientists warn of the planet's catastrophe, along with the advent of Artificial Intelligence that is 'galloping' at a surprisingly geometric pace.

We face a multi-faceted challenge that could be utterly discouraging.

But if not the scientists, engineers and development consultants, who will somehow reverse this situation?

Non-Government Organisations could probably play a vital role, and education of the people on the simple principles of living sustainably is important, but this is a minor concern for the majority of the world population living in deep poverty.

What we need is integrated services and solid recommendations to policy makers, think tanks and governments that keep in their hands the future of our planet.

LDK Consultants shall take this challenge and deliver in excellence.

Stavros Damianidis

CEO



ENERGY

LDK Consultants has been a leader in energy consulting since 1982. Its Energy Department offer a breadth of knowledge and expertise that covers policy, financial, engineering, and technical assistance aspects of sustainable energy projects.



The services provided are in the forefront of energy transition, serving aspects of sustainable energy in all critical sectors: power production and storage, transport, buildings and industry. During the past year, the LDK Group has implemented sustainable energy projects in Greece, Eastern Europe, Western Balkans, Caucasus, the Middle East and Central Asia.

Energy policy is the cornerstone in the transition to sustainable energy. LDK Consultants' team of energy engineers, economists and policy specialists supports governments in all regulatory, policy and planning aspects of energy sector reform. This includes consulting services in the planning and design of energy policy frameworks, preparation of energy strategies, energy efficiency and renewable energy action plans and decarbonisation strategies and actions plans.

In sustainable energy, full services are provided for the preparation and development of energy efficiency and renewable energy projects. In energy efficiency, services are provided both to industry and the building sector with a strong experience in energy audits, feasibility studies, technical design, integration of RES and CHP in buildings, and building regulations and standards. Energy modelling for buildings complements our engineering design services as a key value-added service, especially for clients holding a big stock of buildings.

In renewable energy, market analysis, pre-feasibility and feasibility studies, technical due diligence, and design and construction supervision are provided, along with a track record of more than 6GW capacity in studies. Energy Storage (BESS) has become a major pillar in energy production, where LDK

Consultants offers technical and revenue optimisation services. Over the last years, LDK Consultants has built a strong project portfolio in the technical and construction supervision of renewable energy projects and contract management. The engineering teams offer high-quality engineering services for the timely construction of wind farms and photovoltaic parks for energy project developers. Contract management services, including intermediate and final works completions and issuance of certificates, disbursement requests, technical and contractual requests are also provided.





ENERGY PROJECTS

Project RSC

- **EBRD - Energy Sector Strategy- Assistance in Coordinating the Public Consultation Process and Reporting, May 2023 – December 2023**

Support EBRD in the public consultation process of the new EBRD Energy Sector Strategy for 2024-2028 through the organisation of seven public consultation meetings, both in-person and online, preparation of the Public Consultation Report and support in the approval process. The public consultation meetings were organised in Belgrade, London, Warsaw, Istanbul and online meetings for Ukraine, SEMED and Central Asia regions.

- **Technical Due Diligence for a 440 MWp Solar PV Portfolio, Greece**

Main tasks performed are the site assessment, the licensing review, the grid connection review and the CAPEX estimation for the PV parks as well as for the grid connection works.

- **EBRD, Lenders' Engineer (LE) – Technical Due Diligence for Probistip 110 MWp Solar PV Project, North Macedonia**

Main tasks performed are the EPC and O&M contract review, the estimation of the CAPEX and OPEX, the review of the applicable balancing market rules and associated tariffs as well as the evaluation of the project's financial model.

- **Construction Supervision and Technical Assistance for the Construction of a 36MW Wind Farm, central Greece**

Main tasks performed are the technical supervision of the construction works (soil works, foundations, MV and HV electrical works), the quality assurance management, the monitoring of project's time-schedule and budget as well as the review of contractors requests such as RFIs, variations and disbursements.

Projects MPB

- **EIB - Technical Assistance to the implementation and preparation of the Energy Efficiency Project in the Republic of Moldova, June 2022 – October 2025**

Support in improving energy efficiency in public buildings, both municipal and state owned, across the country. Energy audits were performed in 13 hospitals and medical clinics and will identify proposed measures for refurbishment and a reliable estimate of the costs.

ENGINEERING

LDK Consultants is recognised as a prominent engineering and project management firm in the building and infrastructure sector in Greece, Eastern Africa, the Balkans and Middle East.

Its team of engineers are collaborating with leading real estate developers, hotel operators, cultural centres, contractors and other stakeholders with a focus on offering state-of-the-art services, incorporating the latest sustainability concepts and integrating quality control in all of our operations.

LDK Consultants provides integrated services in design, super-

vision and commissioning along with facility handling design and management. The goal is to ensure both the proper operation and prolonged life cycle of the project. LDK Consultants also offers technical due diligence to major private and institutional clients for building and infrastructure projects.



AREAS OF EXPERTISE

Hotels & Resorts; Commercial and Office Buildings; Culture, Exhibition & Conference Centres; Housing & Residential Facilities; Commercial Complexes; Industrial Buildings; Educational Buildings; Sports Facilities; Logistics Centers; Data Centers; Hospitals & Health Facilities; Museums & Memorials; Solar Power Applications; Fish Hatcheries.



ENGINEERING PROJECTS



• “One & Only”, Glyfada, Athens, Greece

A new 5-star hotel complex in Glyfada. The €300 million investment adds a flagship hotel to the Athenian Riviera to attract high-income travelers. These are the ‘old’ Asteria of Glyfada where, on an area of 278.000 m² acres of protected forest area with a coastline of 2,2 kilometers, the One & Only Aesthesis was created with a capacity of 127 luxury rooms and bungalows and an additional 14 private residences.



• “One & Only”, island of Mykonos, Greece

A new 5-star hotel complex in the Kalafati area. The €81 million investment entails a luxury hotel complex that will have a capacity of around 100 rooms with luxury villas and luxury branded restaurants. The buildup area will be around 10.000 m² in a total land area of 80.000 m².

• “Odysseus – The Greeks and the Sea”

Naval Tradition Park, Athens, Greece

The park will be constructed in an area of around 26.000 m² in the municipality of Palaio Faliro, including concession of a sea zone up to 1 km deep.

The project will include:

- Four key exhibits (battleship “G. Averof” and “Olympias”, the commercial ship “Hellas Liberty” and the submarine “Proteus”
 - “Karnagio” for the revival of the traditional Greek shipbuilding art
 - Outdoor boat show
 - A main exhibition building, which will include a library, where the visitor will have access to historical and modern sources of the Military and Merchant Navy, a conference room with a capacity of 400 people, educational program rooms with modern technological equipment.
 - Commercial stores up to 1.500 m², restaurants
 - Floating infrastructure and marine recreation facilities
 - The mooring of ships, traditional ships, shipwrecks, floating shipyards or other man-made structures or works of art, such as free man-made underwater attractions, is permitted in the marine space granted.
 - Underground parking spaces for 120 vehicles
 - A park in the surrounding area that will exceed 15.000 m²
- In total, the area will allow the construction of 12.000 m² buildings and covering 7.600 m²

• “Triopetra” Development, island of Crete, Greece

The project will be developed on an area of 1.630.000 m² in the Municipality of Agios Vasilios, Prefecture of Rethymno, Crete, along Triopetra beach (the Southernmost part of Europe). The objective is to create a unique residential and leisure sea-side resort.

The master-planning, architectural designs and operation will be in keeping with the ecological and cultural features of Crete, conserving, complimenting and reinforcing both. This ecologically designed resort will aim to create an unprecedented level of luxury reaching the highest of standards.

The project consists of two phases:

Phase A: The Integrated Touristic Development situated along the beach front with an area of 276.572 m²

Phase B: The Upscale Village Development situated on the adjacent property with an area of 1.317.630 m²

• “Five Star Paradise” development, Nairobi, Kenya

Entity/Client: Riverglades Properties Limited
“Five Star Paradise” is located on Kiambu road
Total build up area: 64.700m²

In detail:

- a) Five types of villas:
 - 12 Villas (Type A) of 396m² - 34 Villas (Type B) of 324m²
 - 52 Villas (Type C) of 242m² - 61 Villas (Type D) of 242m²
 - 29 Villas (Type semi-detached) of 286m²
- b) Townhouses: four-bedrooms 195,1m²
- c) Club house & Gym 1.450m²
- d) Heated swimming pool
- e) Tennis court
- f) Infrastructure services for the 40 acres plot

Scope of work

MEP installations for the building includes Schematic Design, Construction Design and Site Supervision of the following installations: Potable Water / Storm Water / Waste Water / Irrigation / Electrical Power / Voice – Data / TV Radio / Security Systems (CCTV, Access Control) / Fire Fighting- Fire Detection / Earthing and Lightning Protection

MEP installations for the infrastructure networks includes Construction Design and Site Supervision of the following installations: Sewage piping / Water supply piping with water tanks and pressure system / Irrigation / Electrical power (low voltage networks, generator, earthing) / Telecommunications / Security Systems (CCTV, electric fence, intrusion detection) / Site Plan lighting / STP



• “Enaki Town”, Rosslyn, Nairobi, Kenya

Entity/Client: Rosslyn Suites Limited
“Enaki Town” project is a mixed-use development located along Redhill road in Nyari, near the Rosslyn Heights Estate and Tamarind Tree Suites.
Total build up area: 22,1 acres

In detail:

- Retail & Commercial on 6,2 acres
- Residential properties on 9,6 acres (a mix of Studio apartments 1,2,3,4-bedroom apartments, penthouses, and duplexes)
- A Botanical Garden on 6,3 acres

Scope of work

MEP installations for the building includes Schematic Design, Construction Design and Site Supervision of the following installations: Potable Water / Storm Water / Waste Water / Irrigation / HVAC / Electrical Power / Voice – Data / TV / Security Systems (CCTV, Access Control) / Fire Fighting- Fire Detection / Earthing and Lightning Protection

MEP installations for the infrastructure networks includes Construction Design and Site Supervision of the following installations: Water Supply / Fire Fighting / Irrigation / Sewage & Rainwater / Lighting / Electrical Power / Electrical Substations / Telephones-Data / Security

• “The Ellinikon Park Rise”, Athens, Greece

As part of Greece’s the ambitious “Ellinikon” coastal master-plan, Bjarke Ingels Group’s stepping residential tower “Park Rise” is to become a landmark to the skyline of Athens. Standing tall as the centerpiece of the “Little Athens” neighborhood, this 50-meter structure is imagined as a thoughtfully crafted statement piece, bringing modern living to the coast and framing sweeping Grecian vistas. “Park Rise” will introduce 88 one-to-five bedroom luxury residences. The project also includes resident-only amenities such as fitness facilities, a 20m. indoor swimming pool, as well as private gardens on the ground floor for relaxation.





ENVIRONMENT

The United Nations Climate Change Conference (COP28)

The United Nations Climate Change Conference (COP28) was organised from 30 Nov. till 12 Dec. 2023 in Dubai, United Arab Emirates, with a participation of 85.000 stakeholders.

It closed on the 13th of December 2023 with an agreement that signals the 'beginning of the end' of the fossil fuel era by laying the ground for a swift, just and equitable transition, underpinned by deep emissions cuts and scaled-up finance. Negotiators from nearly 200 Parties (including 154 Heads of States and Government) came together with a decision on the world's first 'global stocktake' to accelerate climate action before the end of the decade.

The stocktake recognises the science that indicates global greenhouse gas emissions need to be cut 43% by 2030, compared to 2019 levels, to limit global warming to 1,5°C (2,7 Fahrenheit). But it notes Parties are off track when it comes to meeting their Paris Agreement goals. The agreement is to send a powerful signal to investors and policy-makers that the world is united in its desire to stop using fossil fuels, something scientists say is the last best hope to stave off climate catastrophe. It also calls for a tripling of renewable energy capacity globally by 2030, speeding up efforts to reduce coal use, and accelerating technologies such as carbon capture and storage that can clean up hard-to-decarbonise industries.

In the short-term, Parties are encouraged to come forward with ambitious, economy-wide emission reduction targets, covering all greenhouse gases, sectors and categories and aligned with the 1.5°C limit in their next round of climate action plans by 2025.

The agreement came up against powerful opposition from the Saudi Arabia-led oil producer group OPEC, which argued that the world can slash emissions without shunning specific fuels.

Mounting public support for renewables and electric vehicles from Brussels to Beijing in recent years, along with improving technology, sliding costs, and rising private investment have also driven rapid growth in their deployments. Even so, oil, gas, and coal still account for about 80% of the world's energy, and projections vary widely about when global demand will finally hit its peak.

Small climate-vulnerable island states, meanwhile, were among the most vocal supporters of language to phase out fossil fuels and had the backing of huge oil and gas producers such as the United States, Canada and Norway, along with the EU bloc and scores of other governments.

Helping countries strengthen resilience to the effects of climate change

Parties reached a historic agreement on the operationalisation of the loss and damage fund and funding arrangements – the first time a substantive decision was adopted on the first day of the conference. Commitments to the fund started coming in moments after the decision was made totaling more than USD 700 million to date.

Parties agreed on targets for the Global Goal on Adaptation (GGA) and its framework, which identify where the world needs to get to in order to be resilient to the impacts of a changing climate and to assess countries' efforts. The GGA framework reflects a global consensus on adaptation targets and the need for finance, technology and capacity-building support to achieve them.

Increasing climate finance

The Green Climate Fund (GCF) received a boost to its second replenishment with six countries pledging new funding at COP28 with total pledges now standing at a record USD 12,8 billion from 31 countries, with further contributions expected.

Eight donor governments announced new commitments to the Least Developed Countries Fund and Special Climate Change Fund totaling more than USD 174 million to date, while new pledges, totaling nearly USD 188 million so far, were made to the Adaptation Fund at COP28. However, these financial pledges are far short of the trillions eventually needed to support developing countries with clean energy transitions, implementing their national climate plans and adaptation efforts.

The new goal, which will start from a baseline of USD 100 billion per year, will be a building block for the design and subsequent implementation of national climate plans that need to be delivered by 2025.

Azerbaijan will be the next host of COP29 (11-22 Nov. 2024) and Brazil will host the COP30 (10-21 Nov. 2025).

At COP29, governments must establish a new climate finance goal, reflecting the scale and urgency of the climate challenge. And at COP30, they must come prepared with new nationally determined contributions that are economy-wide, cover all greenhouse gases and are fully aligned with the 1.5°C temperature limit.

For more information: <https://unfccc.int/cop28>

ENVIRONMENT

The LDK Group's activity in resolving complex environmental challenges has validated its vision.

Environmental guidelines, procedures, commitments and obligations are prescribed as a prerequisite in any development. Through LDK Consultants' involvement in numerous infrastructure projects in a regional, national, international scale its experts can identify readily applicable and viable solutions to address today's sustainability challenges and respond to clients' changing needs and infrastructure investments.

In 2023, the Environment Department implemented a number of projects in Greece, Serbia, Cyprus, Lebanon and other countries. With the advent of energy transition, much focus was placed on the environmental impacts of offshore energy production, while Carbon Capture, Utilisation and Storage (CCUS) plays a significant role.

At the same time, urban and rural development require careful solid waste management planning. Indeed, urban redevelopment and integrated development of ports, marinas and resorts need a circular approach and taking into consideration social aspects.

The sectors of interest span throughout the environmental sector, including inter alia Strategic Environmental Assessment (SEA) and Environmental Social Impact Assessment (ESIA) project scale; Vulnerability Risk Assessment; Industrial Pollution (assessment, prevention & control); Water Resources; Solid Waste Management; Wastewater and Sanitation; Climate Change; Environmental Policy & Institution.

The range of services include the full cycle of project preparation and maturation in the fields of water resources, wastewater and sanitation and solid waste management: technical assistance (TA); project preparation; master planning; feasibility studies; ESIA's; preliminary/final design of environmental and H&S audit/due diligence and compliance; project's appraisal; tender documentation-FIDIC; contract management; Independent Engineer's services; financial and economic analysis, capacity building and PPP arrangements.



PROJECTS

- Guidance, support and supervision of the local environmental company for the preparation of the SEA (draft and final versions) and the support of the National Energy and Climate Change Plan in the relevant consultation, Serbia
- Consulting services for the preparation of preliminary ecological assessment in the framework of the Strategic Environmental Assessment of the Skiathos island Marina, Greece
- Monitoring of the annual offshore environmental program for the exploration of hydrocarbons in Prinos, Kavala, Greece
- Elaboration of a preliminary environmental impact assessment report for the development of a tourism resort in the area Vasiliika on Megalonisos island in Petalioi insular complex of Karistos Municipality, and assessment of the main MEP infrastructure and facilities required and respective initial costs estimation, Greece
- Waste Management Preliminary Design, Permit Set Design and Construction Design Set of the integrated development project of Hard Rock casino resort in Ellinikon Metropolitan Park, Athens, Greece



TRANSPORT INFRASTRUCTURE

The LDK Group specialises in providing Engineering Consulting services and in conducting feasibility studies, design and design verification of urban transport systems, High Speed Rail and Airports in the Balkan Region and the Eastern Mediterranean region. With the resurgence of major infrastructure projects in Greece, the Group is involved in seminal developments on urban or national scale. In parallel, the Group is continuing its activities in Saudi Arabia.

PROJECTS

• “RIYADH Metro”, Saudi Arabia

Technical Assistance Services for the preparation of Cause and Effect Matrix for Line 6 and Line 4 of Riyadh Metro Project. Preparation of complete design package (calculations, reports and drawings) for four Park & Ride facilities adjacent to Metro Stations.

• “Athens International Airport”, Greece

MEP Technical Design Services for the project “SR 7435.1 – Preparation of Design studies for the future development of the Airport’s North-West non-constructed area”. Design includes Outline Design for Utilities systems and networks - Potable Water, Fire Fighting Water, Sewage Water, Irrigation Water, outdoor cable routes for MV, LV and power supply, including provisions to accommodate the needs for the future facilities at AIA’s west airfield. Detailed Design for Airfield lighting for new taxiway / taxiplane, Apron Lighting for new apron and Street lighting, security fence lighting.

• “Athens Tram Depot”, Greece

MEP and Overhead Catenary Traction Power Design Services for the Construction of new Stabling Shed for tram vehicles and three new maintenance pits in the main maintenance building of Athens Tram Depot complex situated within the Ellinikon area. Preparation of complete MEP & OCL Construction design package (calculations, reports and drawings).

• “Thessaloniki Metro”, Greece

Technical Consultant Services and Preparation of Detail Design & Construction Documents of Telecommunication Systems for the project “Study, procurement, installation and commissioning of telecommunication systems, extra low voltage systems and control systems of the Extension of the Thessaloniki Metro to Kalamaria”.



• “Greek Railway OSE”, Greece

Technical Consultants for the preparation of Tender Documents for the project: “Renovation of equipment and upgrading of software that serves the System as well as the provision of Management, Operation, Maintenance services with troubleshooting and restoration of damage to all the installed equipment of the Radio Coverage System GSM-R at the Traffic Control Center in SKA, on the Piraeus-Thessaloniki-Promahonas railway axis, on railway line Kiato-Athens International Airport and the branches of the line Thriasio-Ikion and Oinoi-Chalkida.

• “Athens Tram”, Greece

Technical Consultant Services and Preparation of Detailed Final Design for Traction Power and Electromechanical Installations of New TRAM Line in Ellinikon. Project includes New tram line design and Restructure of current Tram Stop “Kentro Istioplouas” below the new Flyover as part of the Ellinikon Development Project.

• “Greek Railway ERGOSE”, Greece

- Technical Consultants for the preparation of Construction Design of Overhead Catenary Line and Traction Power for Greek Railway for the project: “Construction of a Traction Power System and anti-noise sound curtains in the section Kiato - Rododafni Contract No. 1511”
- Technical Consultants for the preparation of Construction Design of Overhead Catenary Line, Traction Power, Earthing design and Electromagnetic compatibility (EMC) report for Greek Railway for the project: “Remaining railway infrastructure, superstructure and electrification works in S.S. of Athens and its connection with Metro - 2nd phase S.S. Athens”
- Technical Consultants for the preparation of Construction Design of Overhead Catenary Line and Traction Power for Greek Railway for the project: “Construction of railway stations and stops (buildings, docks and surrounding area), allowance, traction power, signaling and telecommand, ETCS, telecommunications and MEP installations of Panagopoulos Tunnel for the N.R.L. Kiato - Patra in the Rododafni - Rio section (Contract No.1510)”

SERVICES PROVIDED

Feasibility Studies; Financial Assessments; Project Budgeting; Studies MEP, EMC, RAM; Tender Documentation; Construction Supervision - Commissioning Operation & Maintenance Planning; Auditing & Due Diligence; Training for Maintenance and Driving; Project Management; MEP Design Verification (DVE); Engineering Services.



SOCIOECONOMIC DEVELOPMENT

The LDK Group provides consultancy services in strategy, operational planning, organisational appraisal, reform implementation, capacity building and evaluation.

Services Provided:

The LDK Group plans and implements national, regional and local development policy, mostly through the provision of technical assistance, capacity building, strategy and operational planning and programme management services. It is also engaged in the ex-ante, ongoing and ex-post evaluation of projects, policies and programmes, using a variety of

methodologies and tools including social analytics and field research, and by developing measurement systems and sets of indicators.

LDK Consultants provides support for the strengthening, modernisation and organisational reform of public administrations from central governments to regional and local self-government units. It also provides support in setting up organisations.

PROJECTS

• Just Transition Diagnostics, the European Bank for Reconstruction and Development, Serbia, 2021-2023

The project aims to support Serbia in its pathways towards low GHGs in line with Paris Agreement, ensuring a just transition, providing the Government of Serbia relevant analysis on how a green economy transition in Serbia can be accelerated while also managing the social and economic effects of the transition. LDK Consultants has undertaken the analysis of the socioeconomic aspects of the transition and preparation of the relevant action-plan items to alleviate the socioeconomic impacts at a national and territorial level.

Key elements of the study:

Processing, analysis of quantitative and qualitative data on the structure of economic activity, employment and skills;
Review of direct and indirect impacts of an energy sector transition for workforce and skills;
Assessment of opportunities for workers both in the existing coal/fossil fuel assets and the associated supply chains to be redeployed in other activities, or retrained;

Mapping of medium and long-term strategic development measures, together with possible sources of investment, for the long-term sustainable development of the regions;
Policy proposals for the sustainable development of the regions;
Contribution to the drafting of the Just Transition Action Plan for the transition of lignite areas.

The action plan developed:

Policy reforms identified as being necessary and the governance model for the Just Transition;
Investments in energy efficiency, public and sustainable transport infrastructure, digital connectivity, new jobs in the green economy;
Soft actions focusing on the workforce;
An initial estimate of overall implementation cost and routes to finance specific actions;
A set of proposed indicators to track implementation and ensure the proposed plan can achieve its objectives.



- **Evaluation of the impact of actions supporting social infrastructure, social enterprise grants, and actions supporting transport, culture and the environment under the Regional Operational Programme of the Southern Aegean, Managing Authority of the Regional Operational Programme of the Southern Aegean, Greece, 2023**

Within the framework of this contract LDK Consultants conducted an in-depth evaluation which examined the results of the actions under evaluation and assessed their effectiveness and efficiency, while examining also the impacts which could be discerned so far as a result of the actions' completion. The evaluation covered almost all actions of the Operational Programme, including health, welfare and education infrastructure, water and waste projects, road transport and harbours, culture and the environment as well as the grant funding provided to social enterprises.

Key elements of the study:

Collection, processing, analysis and interpretation of quantitative data; Analysis of the programme's framework and intervention logic and coherence with national and European programmes and strategies; Drafting of conclusions and recommendations.

The study evaluated actions in the fields of:

Culture: restoration of archaeological sites and museum buildings;
 Education: refurbishment and creation of new school buildings, procurement of equipment for schools and universities, renovations for university buildings;
 Welfare: daycare centres for children and daycare / residential units for the disabled or the elderly;
 Health: equipment for hospitals, procurement of ambulances;
 Transportation: harbours and road projects;
 Natural heritage: parks and protected areas;

Energy Efficiency: upgrading of energy efficiency measures in public buildings such as stadiums and schools;
 Civil protection: procurement of vehicles for fire and police services, physical interventions to prevent flooding;
 Social economy: grants to social enterprises to assist in their growth and development.

- **“Study to update the National Strategy for the Social Economy”, Greek Ministry of Labour and Social Affairs**

LDK Consultants conducted a study to update the National Strategy for the Social Economy to incorporate the concept of Social Innovation in line with the European Action Plan for the Social Economy, identifying and including actions in this field for the updated strategy.

The Strategy's Action Plan was designed taking into account the current status and dynamics of the Greek SSE sector; the institutional/legal framework and potential financing sources and the emerging needs of the sector.

Key elements of the study:

Stakeholder engagement to guide the incorporation of social innovation into the social economy strategy;
 Updated draft of the National Strategy for the Social Economy, including actions in support of social innovation;
 Alignment of the strategy with the European Action Plan for the Social Economy;
 Identification of Actions supporting the updated strategy;
 Analysis of the proposed actions with reference to the SWOT and PESTEL analysis of the strategy;
 Definition of problem trees and objective trees to guide the intervention logic of the new actions;
 Analysis of the complementarity of the proposed actions with existing actions;
 Identification of flagship actions in the field of social innovation.

OTHER PROJECTS

- Technical Assistance to support the preparation of evaluation planning documents for the programmes of Western Macedonia, Greece, 2023-ongoing
- Advisory services for the definition and specification of strategic interventions for the strengthening of the competitiveness, extroversion and innovation of the agri-food sector of the Region of Attika for the period 2021-2027, Greece, 2023-ongoing
- Evaluation of the action: “Strengthening and Development of the Leadership and Management Skills of working women in the Private Sector”, Greece, 2022-2023
- Support services in the field of Blue Development under the Strategic Project EUSAIR FACILITY POINT, in support of the work of the Adriatic-Ionian Macro-region, Greece, 2022-2023
- Advisory services for the implementation of the project “Social innovation Ecosystem Development (SEED)”, Greece, 2022-2023



INFORMATION DISSEMINATION

The activity of the LDK Group has focused both on large-scale technical assistance projects, related to communication and public relations, as well as on framework contracts in event organisation (head of several consortia).

Events have been organised on cutting-edge themes such as civil society, gender equality, food and nutrition, development policy, water management, migration in over 100 countries. Our track record of over 500 events organised worldwide ensures success for any event undertaken by LDK Consultants.

Services Provided:

Design and implementation of public awareness and communication campaigns:
LDK Consultants offers a complete range of services from the

assessment of the needs of the campaign, its conception and implementation including design and production of campaign materials.

LDK Consultants organises onsite events, while during its online events modern digital communication strategies and information dissemination techniques are applied.

Hybrid events are also popular for health reasons and also as a way to curb the carbon footprint.



INFORMATION DISSEMINATION EVENTS



For the Union for the Mediterranean (UfM)

"Research and Innovation for Mediterranean Resilience"

"Conference on Youth Entrepreneurship and Future of Work"

"4th Working Group on Environment and Climate Change & Regional Roundtable on WEFE Nexus"

"Technical Trainings on Trade Rabat & Technical Trainings on Trade Tunis"

"UfM UNIDO - Women Business Forum"

"UfM High Level Conference on Agrifood Industry and Food Security & Training on digitalisation"

"Fifth UfM Trade and Investment Forum - Jobs through Trade and Investment: Boosting employment in the Southern Mediterranean"

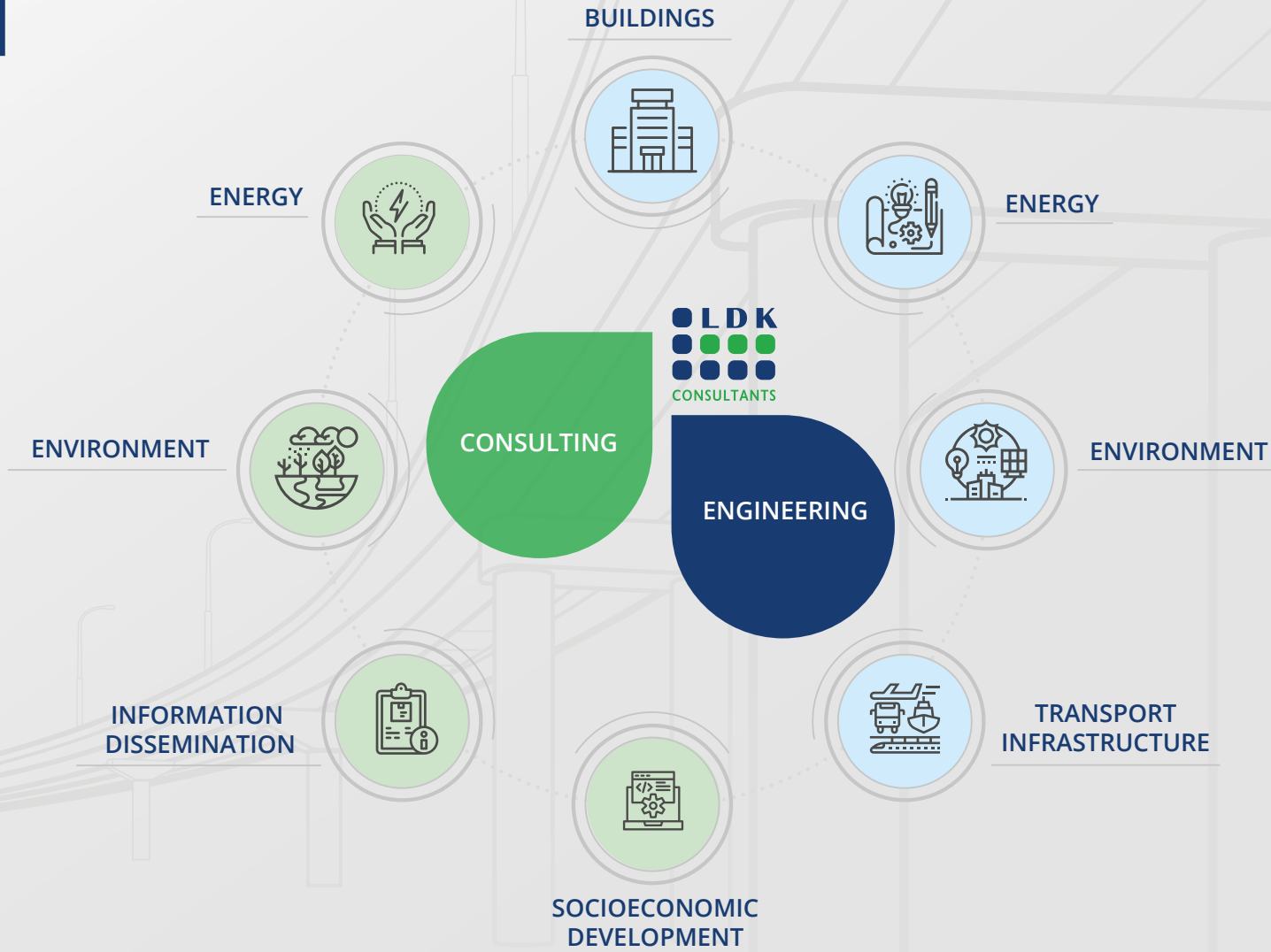
For the European Commission

"Panap Meetings - "Support the Transition Towards Sustainable and Resilient Agri-Food Systems in Africa" - Durban, South Africa"

"AAP 2022 Global Allocations - Support to the organisation of meetings and workshops - INSC"



SECTORS



SNAPSHOT OF THE GROUP



5

Subsidiaries
in 3 Continents



56

Years
of Sustainable
Development



6

Sectors

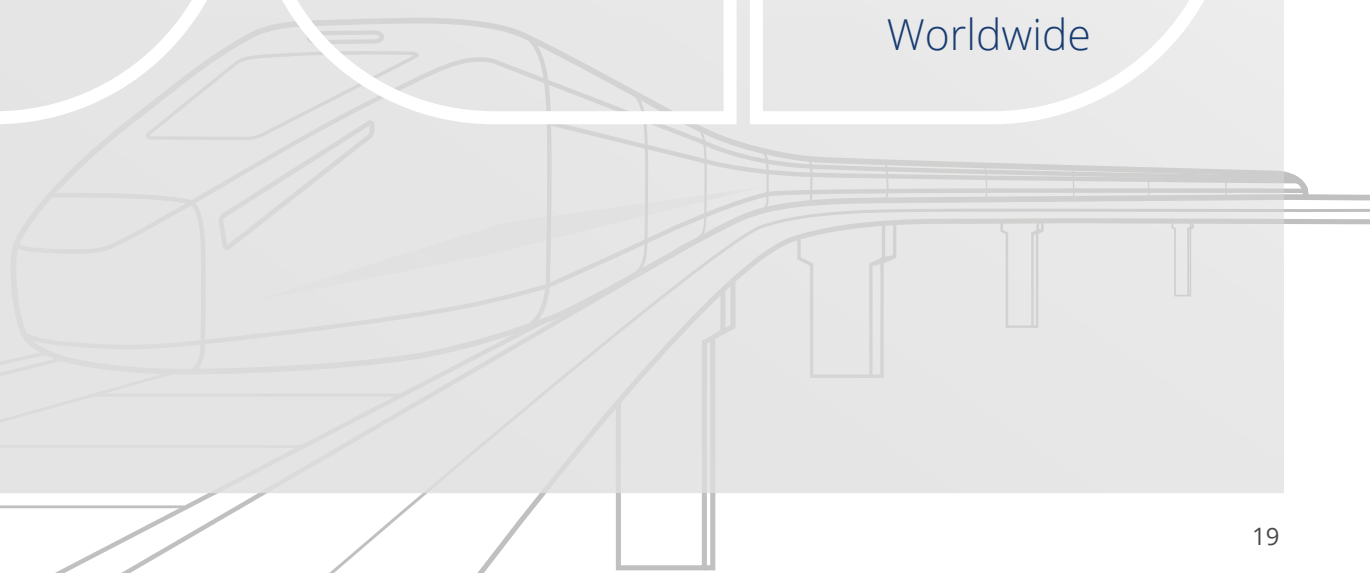


2.900

Projects in

120

Countries
Worldwide





CLIENTS

ORGANISATIONS, FINANCIAL INSTITUTIONS AND DONORS

European Commission and its Directorates General
European Bank for Reconstruction and Development
European Investment Bank
World Bank
United Nations Development Programme
Council for Development and Reconstruction-Lebanon
European Agency for Reconstruction-Balkans
European Environment Agency
Federation of Canadian Municipalities
French Development Agency
German international Aid
Hellenic Hydrocarbons and Energy Resources Management Company
Hellenic Republic Asset Development Fund
Millennium Challenge Corporation
Oxfam International
Plan Bleu
Union for the Mediterranean Secretariat
Ministries of: Environment, Energy,
Local Administration, Spatial Planning, Interior,
Agriculture, Maritime
Regulatory Authorities, Transmission System
Operators, Utilities
Regional and Local Authorities

PRIVATE SECTOR & FOUNDATIONS

Aegean Airlines
Aegean Motorway
AFRY
AGC Equity Partners
Aktor
Alcatel Submarine Networks
Alexander S. Onassis Foundation
Alpha Bank
Antenna TV
Arcadis
ARCHIRODON
ARUP
Athens College
Athens International Airport
Atkins
Basile & Elise Goulandris Foundation
Coca Cola 3E
Commodity and Mining Insight Ltd
Cosmote
Digital Realty Hellas S.A.
Dimand
EDP Renewables
Egis Group
Elgeka
Elmya Energy
Enel Green Power
Energean Oil & Gas
ERM
Fais Group

PRIVATE SECTOR & FOUNDATIONS

Four Seasons Hotels & Astir Palace Vouliagmeni
Fraport Greece
Goldman Sachs
Grivalia Management Properties
Hines
HIP Hotel Investment Partners
Hyatt Regency Thessaloniki
Iberdrola
IBM
Intrakat
Karanovic & Partners O.A.D. Beograd
KONKAT
Lamda Development
Lamda Hellix
Laskaridis Group
Masdar Taaleri Generation
Mirum Group
Noval Property
Olympia Group
Olympia Odos
Piraeus Bank
Royal Development Company
Star TV
Stavros Niarchos Foundation
Suez Group
TEMES
Terna
Viohalco
Wind Hellas

CONSULTING FIRMS

AECOM
Arcadis
Atkins
Deloitte
Egis Group
Elia Grid International
ERM
Ernst & Young
GFA Consulting
GOPA Consultants
Grant Thornton
Hill International
KPMG
McBains
MottMacDonald
NTU
PwC
Ramboll
Suez Consulting (SAFEGE)
Sasaki
SLR Consulting
Stantec
Wood PLC
Worley Parsons



CONTACTS

GREECE Athens Headquarters
LDK CONSULTANTS S.A.
Off 21, Thivaidos Street
GR-145 64 Kifissia, Athens
T: +30 210 8196700
E: main@ldk.gr
www.ldk.gr

CYPRUS Limassol
LDK CONSULTANTS CYPRUS LTD
Spatharikou Street 5
4004 Mesa Geitonia Limassol
E: ldkcyprus@ldk.gr

KENYA Nairobi
LDK AFRICA LTD
VM Towers Village Market
P.O. Box 204-00621 Nairobi
E: ldkafrica@ldk.gr

BELGIUM Brussels
LDK CONSULTANTS EUROPE SA
Av. A.J. Slegers 397
B-1200 Bruxelles
E: ldkeurope@ldkconsultants.eu

JORDAN Amman
LDK FOR MANAGEMENT
CONSULTING LLC
Kabul Street, Complex #25, 3rd floor, Amman
E: ldkjordan@ldk.gr

SERBIA Belgrade
LDK CONSULTANTS doo Beograd
Kralja Milana 17
11000 Belgrade
E: ldkserbia@ldk.gr





www.ldk.gr

